



OUR PURPOSE

**We drive  
innovation to  
help the world  
evolve.**

**FEV**



**Your engineering  
and consulting  
partner – reliable,  
competent and  
independent**

GLOBAL REACH –  
ONE FACE TO THE CUSTOMER

**>7,100**

Employees  
globally

**>860 M€**

Total output  
(2023)

**4**

Benchmark centers  
around the globe

**200**

Patent applications  
per year

**70%**

Academics

**>45**

Years of experience

**>45**

Subsidiaries on  
six continents

**>50**

Different nations





**We are the innovation powerhouse for mobility, energy and software that fosters sustainability and a greater quality of life for all**

**FeV**  
CONSULTING

BUSINESS AREAS



#FeelEVolution

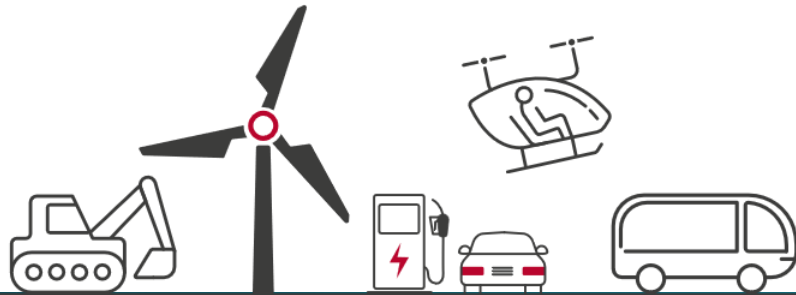
# We are the first choice for solving your techno-strategic challenges, delivering unparalleled expertise and tailored solutions



OUR USP



# We stay close to our global customer base



## INDUSTRIES

Automotive, Energy, Transport & Logistics, Industrial Goods, Governments & Associations, Private Equity & Principal Investors, Chemicals & Materials, and more!

**2,000+  
PROJECTS  
IN 30 COUNTRIES**



FOUNDED IN  
**2011**



AACHEN  
BEIJING  
BILBAO  
COLOGNE  
CHICAGO  
DETROIT

DUBAI  
MARSEILLE  
MUNICH  
RIYADH  
TOKYO



**FEV**  
CONSULTING

**150**   
**CONSULTANTS**  
AROUND THE GLOBE



**40+**  
WORLDWIDE  
FEV GROUP  
OFFICES

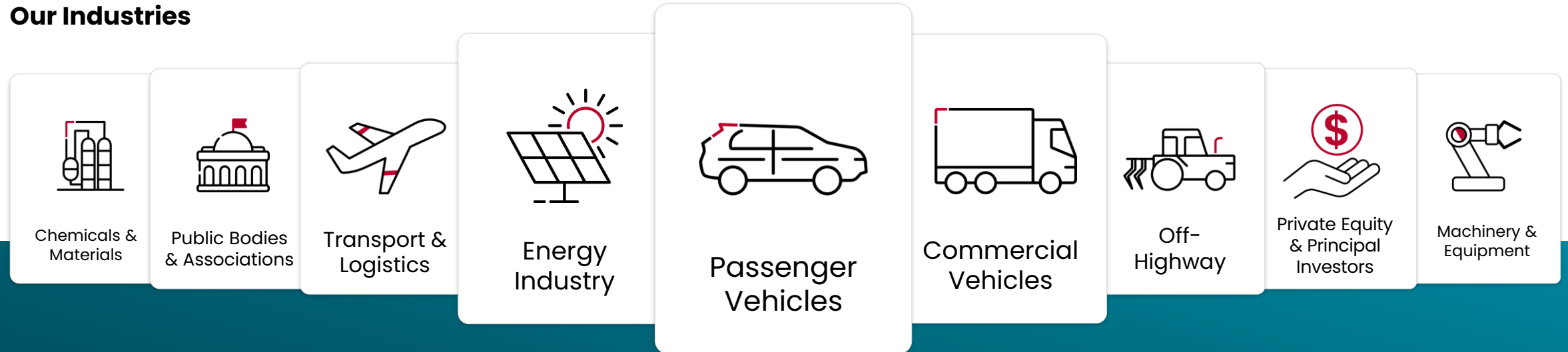
**On six  
continents**

# We offer techno-strategic consulting and advisory services to the automotive, energy, and other high-tech driven industries

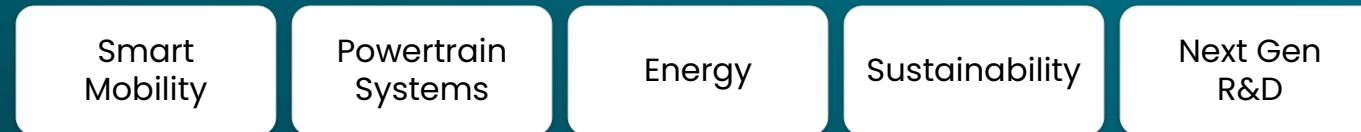


## OUR INDUSTRIES, HYPERTHEMES & SOLUTIONS

### Our Industries



### Our Hyperthemes

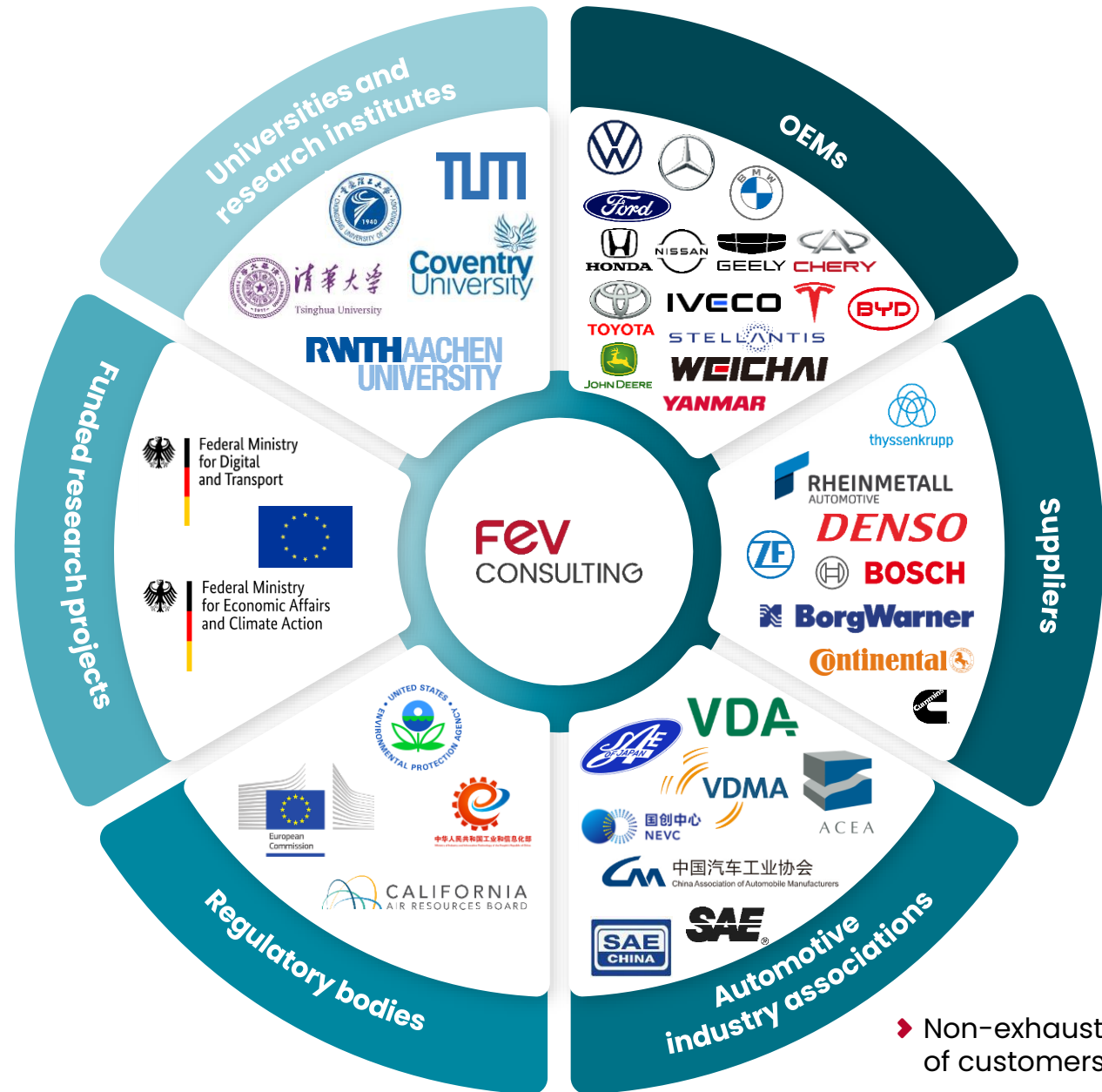


### Our Solutions



## OUR ECOSYSTEM

As an integral part of our industries' ecosystems, we seamlessly integrate diverse capabilities to drive innovation



**FEV**  
CONSULTING

► Non-exhaustive selection of customers & partners





# What are we looking for?

## LOCAL RECRUITMENT



Student worker  
or Mater thesis



First job (full-time  
employee)

► **A clear progression pathway from junior positions**



## KEY AREAS OF EXPERTISE

#Mobility #Automotive #Aerospace #Marine #Rail  
#Smart cities #Energy #Powertrain strategies  
#Tech roadmapping #Cost & Benchmark



# We're in a dynamic growth phase and looking for top talent to join our team

## Are you the one?



**Ainhoa Irureta**

Manager  
FEV CONSULTING

+34 663 984 040  
[irureta-pelaz@fev.com](mailto:irureta-pelaz@fev.com)

**FEV Consulting Iberia SL**

Gran vía Don Diego Lopez  
de Haro, 89, 48011 Bilbao

España

